



FAST TURN

Quick acting fasteners

BÖLLHOFF

FAST TURN Quick acting fasteners



FAST TURN are widely used where rapid assembly and disassembly is required. Simplicity of use make it ideal when service requirement involves removal and refitting of panels and guards. Less than half rotational turn releases and reengages the fastener.

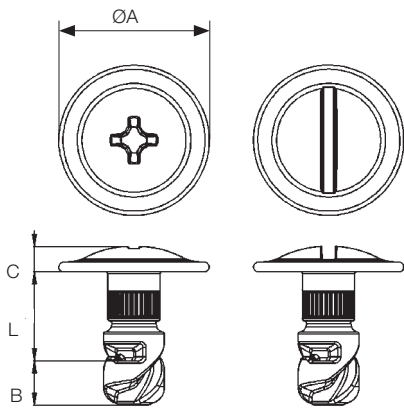
The benefits

- Cost effective operation
- Easy installation
- Simple to operate
- Positive secure locking
- Vibration resistant
- Consistent clamp force
- Compensates for panel tolerance
- Stud can be captivated to the panel
- Environmentally friendly and recyclable



Standard surface treatment for stud and receptacle is silver-zinc laminar.

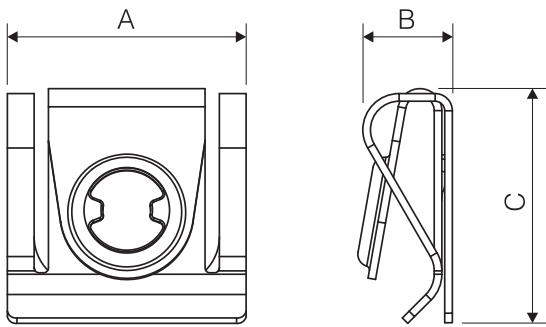
Stud



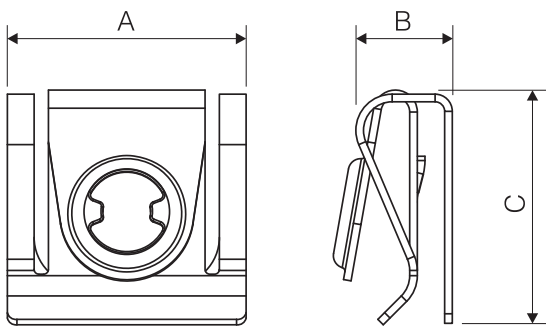
STUD DIMENSION				RECOMMENDED PANEL HOLE SIZE	
STUD Ø	A Ø	B	C	STUD Ø	HOLE Ø
5	13	3.5	2.0	5	5.0 / 5.2
7	18	5.0	3.0	7	7.0 / 7.2
8	20	5.0	3.5	8	8.0 / 8.2
9	22	7.0	4.0	9	9.0 / 9.2

L = to be defined through the stud length selector (see side page)

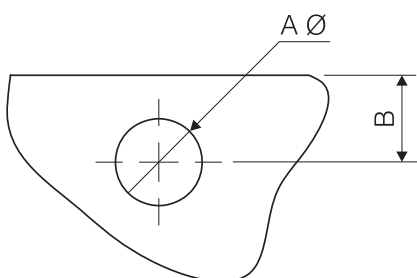
Receptacle



SUPPORT THICKNESS 0.5 - 3.0 MM			
STUD Ø	A	B	C
5	19	8.0	23.0
7	25	9.5	24.5
8	25	9.5	24.5
9	30	11.0	29.5



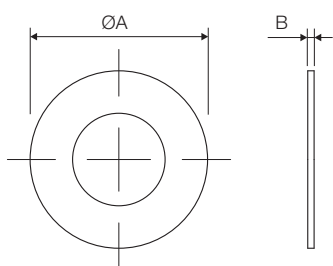
SUPPORT THICKNESS 3.0 - 5.5 MM			
STUD Ø	A	B	C
5	19	8.0	23.0
7	25	10.0	24.5
8	25	10.0	24.5
9	30	10.5	29.5



SUPPORT PREPARATION		
STUD Ø	A Ø	B
5	8.5 / 8.7	10.8 / 11.0
7	11.0 / 11.2	10.5 / 11.0
8	11.0 / 11.2	10.5 / 11.0
9	14.0 / 14.2	12.5 / 13.0

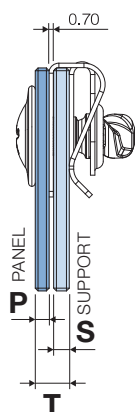
All dimensions are in mm

Retainer



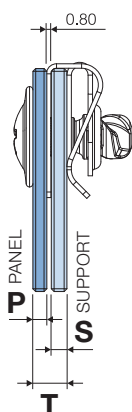
PLASTIC RETAINER		
STUD Ø	Ø A	B
5	10	0.5
7	14	0.5
8	14	0.5
9	16	0.5

Stud length selector



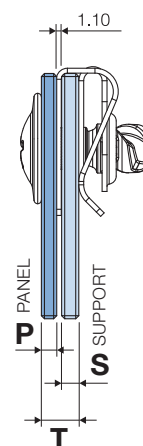
$$T = P + S + 0.7$$

FAST TURN Ø 5	
T	L
2.5 – 3.4	9
3.5 – 4.4	10
4.5 – 5.4	11
5.5 – 6.4	12
6.5 – 7.4	13
7.5 – 8.4	14
8.5 – 9.4	15
9.5 – 10.4	16
10.5 – 11.4	17
11.5 – 12.4	18
12.5 – 13.4	19
13.5 – 14.4	20
14.5 – 15.4	21
15.5 – 16.4	22
16.5 – 17.4	23
17.5 – 18.4	24
18.5 – 19.4	25



$$T = P + S + 0.8$$

FAST TURN Ø 7 – 8	
T	L
2.5 – 3.4	10
3.5 – 4.4	11
4.5 – 5.4	12
5.5 – 6.4	13
6.5 – 7.4	14
7.5 – 8.4	15
8.5 – 9.4	16
9.5 – 10.4	17
10.5 – 11.4	18
11.5 – 12.4	19
12.5 – 13.4	20
13.5 – 14.4	21
14.5 – 15.4	22
15.5 – 16.4	23
16.5 – 17.4	24
17.5 – 18.4	25



$$T = P + S + 1.1$$

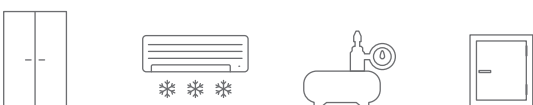
FAST TURN Ø 9	
T	L
2.0 – 2.9	10
3.0 – 3.9	11
4.0 – 4.9	12
5.0 – 5.9	13
6.0 – 6.9	14
7.0 – 7.9	15
8.0 – 8.9	16
9.0 – 9.9	17
10.0 – 10.9	18
11.0 – 11.9	19
12.0 – 12.9	20
13.0 – 13.9	21
14.0 – 14.9	22
15.0 – 15.9	23
16.0 – 16.9	24
17.0 – 17.9	25

FAST TURN Quick acting fasteners



More and more manufacturers are using FAST TURN to reduce costs, enhance their products and provide added value to their customer.

- Electrical cabinets
- Air conditioning units
- Compressors
- Inspection panels



- Retain engine covers
- Noise shields on a variety of motor vehicles



Böllhoff International with companies in:

Argentina
Austria
Brazil
Canada
China
Czech Republic
France
Germany
Hungary
India
Italy
Japan
Mexico
Poland
Romania
Russia
Slovakia
South Korea
Spain
Switzerland
Thailand
Turkey
United Kingdom
USA

Apart from these 24 countries, Böllhoff supports its international customers in other important industrial markets in close partnership with agents and dealers.

Böllhoff Group
Please find your local contact on www.boellhoff.com
or contact us under fasteningtechnology@boellhoff.com

