

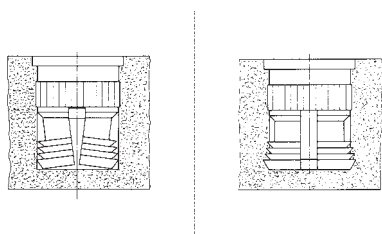
The versions – thread inserts for expansion anchoring **Expansionsert 2**



**The advantages**

- For reactive resins, PUR, elastomers, integral hard foams as well as for wood composite materials
  - Wear-resistant threads
  - Quick, cost-effective installation
- Material: Cu Zn 38 Pb 2 (EU 2000/53 compliant)

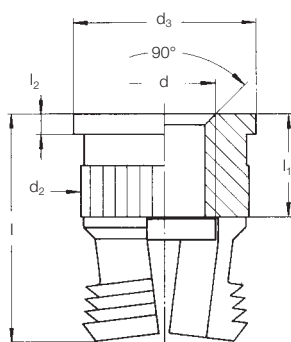
**Principle**



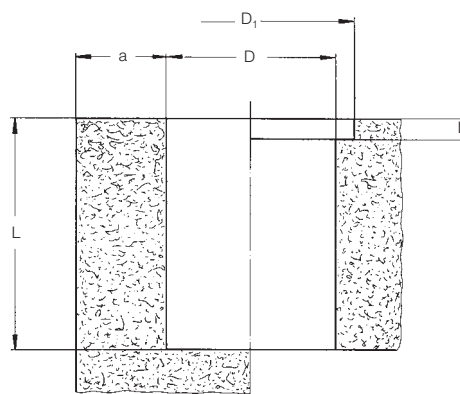
The **EXPANSIONSERT 2** thread insert consists of a body with internal thread, which has knurls and undercuts on the circumferential surface. Inside the body, there is a spreader plate that is pressed downwards when the thread insert is installed in the mounting hole. Upon installation, the slotted bottom part of the **EXPANSIONSERT 2** is expanded and its cutting rings are anchored in the wall of the mounting hole. The thread insert is thus reliably secured against pull-out and twisting.

**Technical data**

Type 0235



Mounting hole<sup>①</sup>



For installation tools and machines, see pages 39 – 40

d	Order No	l	d <sub>2</sub>	d <sub>3</sub>	l <sub>1</sub>	l <sub>2</sub>	D <sup>+0.1</sup> ①	D <sub>1</sub>	L <sub>min.</sub>	a <sub>min.</sub>
M 3	0235 103 0008	8.0	5.9	7.0	3.0	0.8	5.5	7.2	8.2	4.0
M 3.5	0235 135 0008	8.0	5.9	7.0	3.5	0.8	5.5	7.2	8.2	4.0
M 4	0235 104 0095	9.5	6.9	8.0	4.0	0.8	6.5	8.2	9.8	5.0
M 5	0235 105 0011	11.0	8.4	10.0	5.0	0.8	8.0	10.2	11.3	6.0
M 6	0235 106 0125	12.5	8.4	10.0	6.0	0.8	8.0	10.2	12.8	6.0

Metric ISO thread according to DIN 13-6H.  
 Technical modifications reserved.  
 Minimum quantity on request.  
 All dimensions in mm.

① Guide values: depend on moulding material, may have to be changed after setting trials.

Other sizes and special designs on request.